

swisstech.

Press Kit

AI & ROBOTICS

Kemaro

HEALTHTECH

AudioVitality
Computer Vision

CLEANTECH

Droople

ICT

Qibud
goNeon

LIFESTYLE

EquipSport

KEMARO

Autonomous Robotics



LOOKING FOR
CUSTOMERS
PARTNERS
INVESTORS

FUNDING
SERIES A

PRODUCT DESCRIPTION

Swiss-engineered, globally deployed. KEMARO is a leader in autonomous AI-cleaning for complex industrial spaces. Our flagship K900 robot, engineered entirely in-house, from mechanics to AI, integrates seamlessly into smart factory environments.

Trusted by over 600 global accounts, including P&G, Nestlé, Unilever, and BMW, we've deployed over 1,500 robots across 26 countries, reducing industrial cleaning costs by 70% while protecting workers, extending equipment lifespans, and redefining the global standard.

CONTACT

ARMIN KOLLER
CEO/CO-FOUNDER
armin.koller@kemaro.ch





LOOKING FOR
CUSTOMERS
PARTNERS
INVESTORS

FUNDING
SERIES A

PRODUCT DESCRIPTION

Droople develops a Water Intelligence Platform combining IoT hardware, edge computing, and AI analytics to make water visible, measurable, and manageable at the point of use. At its core lies Droople's iLink® device, a sensor-agnostic IoT bridge that connects any water asset, such as dispensers, filters, toilets, or treatment systems, to the cloud. Today, Droople manages more than 5,000 connected installations, serves 120+ customers across 20+ countries and 5 continents, and continues expanding its AI-driven infrastructure intelligence platform across the water, beverage, hospitality, facility management, healthcare, and smart building sectors.

CONTACT

RAMZI BOUZERDA
CEO/CO-FOUNDER
ramzi@droople.com



Equip^o sport



LOOKING FOR
CUSTOMERS
PARTNERS
INVESTORS

FUNDING
SERIES B

PRODUCT DESCRIPTION

Equip Sport deploys smart multi-sport equipment stations connected to our mobile app, in public urban spaces, free of charge for users. Our model brings together city councils and brand sponsors to co-finance infrastructure that gets people moving. With over 1 million sessions logged, a 4.8/5 user rating, and stations across Europe and North America, we're redefining what accessible urban sport looks like.

CONTACT

QUENTIN GEROMIN
CEO/CO-FOUNDER
quentinG@equip.app





LOOKING FOR
CUSTOMERS
PARTNERS
INVESTORS

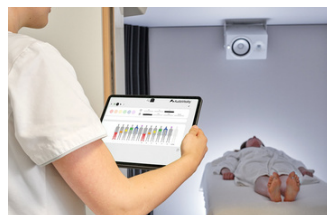
FUNDING
SERIES A

PRODUCT DESCRIPTION

AudioVitality delivers clinically validated low-frequency sound therapy through immersive studios, moving key biomarkers - HRV, stress, sleep, and recovery - within a single 40-minute session. The platform serves four verticals: luxury spas and longevity centres seeking premium wellness differentiation, elite sports clubs accelerating athlete recovery, corporate environments addressing burnout and performance, and clinical partners targeting tinnitus and neurological conditions.

CONTACT

FLAVIO SALDINI
BD & FINANCE MANAGER
flavio.saldini@audiovitality.com





COMPUTER VISION AG

AI ENGINEERS



LOOKING FOR
CUSTOMERS
PARTNERS
INVESTORS

FUNDING
SERIES A

PRODUCT DESCRIPTION

Computer Vision AG is a Swiss MedTech pioneer specializing in high-performance AI solutions for medical imaging diagnostics. Its core product, Emeralgo, is a fully automated platform for interpreting MRI scans in the musculoskeletal (MSK) domain. The company follows a “one-stop shop” approach: starting with the lumbar spine, it is progressively expanding its portfolio to include the knee, shoulder, and hip, ultimately covering the entire spectrum of orthopedic diagnostics within a single suite.

CONTACT

RENÉ BALZANO
CEO

reneb@computervision.swiss





Realignment intelligence



LOOKING FOR
CUSTOMERS
PARTNERS
INVESTORS

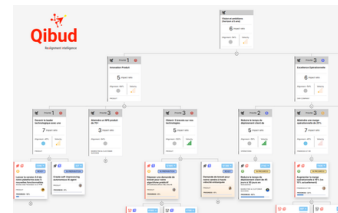
FUNDING
SEED

PRODUCT DESCRIPTION

Qibud is a Swiss deeptech platform delivering a structural digital twin of the organization, readable to humans and AI agents. Built on a temporal knowledge graph, it tracks work and computes its trajectory inside the same product, detecting strategic drift before it appears on a dashboard. The platform has been running in production for 5 years, helping executives close the 37% gap that Harvard Business Review measures between strategy and execution.

CONTACT

GILLES RUFFIEUX
CEO & CO-FOUNDER
gilles@qibud.com





LOOKING FOR
CUSTOMERS
PARTNERS
INVESTORS

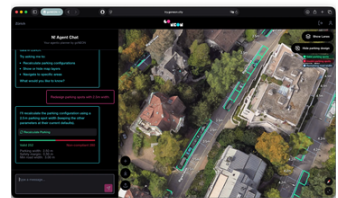
FUNDING
PRE-SEED

PRODUCT DESCRIPTION

goNEON's core technology is an agentic system in which AI agents autonomously work through planning tasks – computing route alternatives, running compliance checks, generating cross-section proposals, and evaluating scenarios against applicable standards. The agents operate within logically consistent models of the built environment, ensuring that every result respects physical constraints, geometric rules, and the relevant regulatory framework.

CONTACT

RAPHAEL EDER
CO-FOUNDER
raphael@goneon.city



ABOUT SWISSTECH:

The swisstech campaign is a private-public initiative supported by Presence Switzerland, Innosuisse, Swissnex and Switzerland Global Enterprise. The campaign aims to raise

Switzerland's profile as a world-leading innovative location for business and to increase the visibility of its deeptech and other state-of-the-art companies, as well as of its research excellence abroad. To learn more, please visit: www.swiss.tech

Follow #swisstech to discover the best Swiss Made technology at the most relevant global tech events. As an outstanding innovation and technology hub, Switzerland is an attractive location for investors and foreign companies.

swisstech pavillon booth n° **E136**

Web Summit Vancouver

Contacts Media:

karine.wittmer@s-ge.com

swisstech.