

swisstech.

INVESTOR & PRESS KIT

AI & ROBOTICS

E-Outdoor
Koralabs
Manukai
Pave Space
Tethys Robotics
Vestir

CLEANTECH

4QT
Enerdrape
fortyfour
Perovskia Solar
Planeto
Proseed
Riverkin
Seprify
Swistor
Treeless
Voltiris

CYBERSECURITY

Brightside AI

HEALTHTECH

Bearmind
IMPLANZ
MYNERVA
Provuu AG
Resilient
Watchibia

ICT

CCRAFT
Identic AI

ECOSYSTEM

Canton Bern
Canton Schaffhausen
Canton Schwyz
Canton St.Gallen
EPFL SIP West
ESA BIC Switzerland
Greater Zurich Area
Innovaud
Kickstart Innovation
Lucerne Business

INVESTOR

Spicehaus
Swisscom Ventures
VI Partners



E-SKIMO

POWER YOUR ASCENT



LOOKING FOR

INVESTORS
PARTNERS
RETAILERS

FUNDING

SEED

PRODUCT DESCRIPTION

E-OUTDOOR SA is a Swiss sports innovation company behind E-SKIMO, the first electric-assist ski touring system. After 4 years of engineering and alpine testing, we are launching the E-SKIMO Launch Edition, a limited series of 100 pairs. Designed to reduce uphill effort while keeping the full thrill of skiing downhill, E-SKIMO makes mountain adventures more accessible, enjoyable, and sustainable.

CONTACT

Nicola Colombo
Founder
nicola@e-outdoor.swiss





LOOKING FOR
CUSTOMERS
INVESTORS

FUNDING
PRE-SEED

PRODUCT DESCRIPTION

We're building an AI assistant to eliminate tool overload and manual prep for agronomists. Instead of juggling 10+ tools to give crop management advice, they get one chat-based interface that answers questions and generates reports, powered by weather, satellite, soil, crop history, regulations, product sheets, and WhatsApp chats with farmers. We combine structured and unstructured data using vectorized retrieval, augmented generation, and proprietary ML models trained on agronomic data.

CONTACT

Luca Corinzia
cofounder and CEO
luca.corinzia@koralabs.ch



Manukai



LOOKING FOR

PARTNERS
CUSTOMERS
INVESTORS

FUNDING

SEED

PRODUCT DESCRIPTION

Manukai develops AI-powered automation and analytics that transform historical data into production efficiency. By analyzing existing CAM programs, the system identifies proven machining strategies and adapts them to new geometries directly in Mastercam. Instead of starting from scratch, machinists receive context-rich suggestions they can preview, refine, and directly apply – resulting in faster programming, reduced cycle times, and greater standardization and reliability.

CONTACT

Pascal Weber
Co-Founder & CEO
webepasc@manukai.ch





LOOKING FOR

INVESTORS

FUNDING

PRE-SEED
SEED

PRODUCT DESCRIPTION

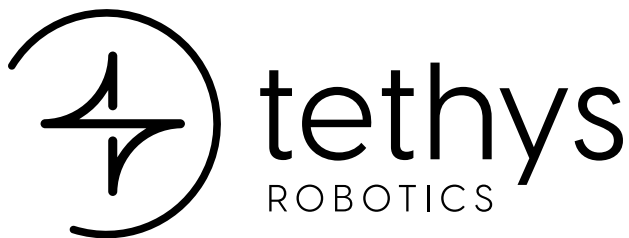
PAVE Space is a Swiss company built on the success of Gruyère Space Program, during which our team developed the first reusable rocket demonstrator in Europe. This achievement demonstrated our team's unique capabilities in three key areas: Space propulsion, Control algorithms and Fast and agile integration of complex systems. Today, our goal is to enable last-mile satellite delivery, transporting payloads from low Earth orbit to any other orbit in under 24 hours.

CONTACT

Julie Böhning
CEO

julie.bohning@pave.space





LOOKING FOR

INVESTORS
CUSTOMERS
TALENTS

FUNDING

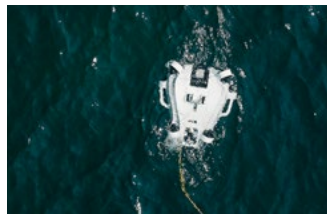
SEED

PRODUCT DESCRIPTION

Tethys Robotics AG is a Swiss ETH Zurich spin-off developing autonomous subsea robots for defence tech (UXO clearance) and critical infrastructure inspection across renewables and offshore energy. Our hybrid ROV/AUV platform, Tethys ONE, delivers automated inspection, advanced autonomy, and modular payloads for faster, safer, and more cost-effective subsea operations.

CONTACT

Jonas Wüst
CEO & Co-Founder
jonas@tethys-robotics.ch





LOOKING FOR

INVESTORS
PARTNERS
RETAILERS
TALENTS

FUNDING

PRE-SEED

PRODUCT DESCRIPTION

Vestir is a next generation, AI powered fitting room, where Shoppers can see clothes on a true likeness of themselves in 3D, in motion. Vestir plugs and plays on Retailers product pages, allowing Shoppers to shop with their own high quality avatar. Vestir increases customer engagement through elevating their experience, whilst also solving for size & fit.

CONTACT

Joanne Filbin
Founder & CEO
joanne.filbin@vestir.ai



LOOKING FOR

INVESTORS
CUSTOMERS
PARTNERS
TALENTS

FUNDING

SEED

PRODUCT DESCRIPTION

4QT pioneers high-power electric drivetrains for heavy equipment, enabling emission-free construction without compromising performance. Our hybrid solutions combine cutting-edge hardware and smart software to reduce total cost of ownership by up to 40%, while allowing powerful industrial machines to operate independently of charging infrastructure. We validate our technology with real-world prototypes and OEM pilots, creating a scalable path to decarbonize the construction industry.

CONTACT

Christoph Lang
CCO & Co-Founder
c.lang@4qt.ch





LOOKING FOR

INVESTORS
CUSTOMERS
PARTNERS

FUNDING

SERIES A

PRODUCT DESCRIPTION

Enerdrape is an EPFL spin-off pioneering the world's first non-invasive geothermal panels. Our patented, modular panels transform underground structures—such as car parks and tunnels—into renewable energy sources for heating and cooling. Easy to install, recyclable, and compatible with heat pumps, they offer a cost-effective solution for retrofits and new builds, helping cities cut CO₂ emissions and accelerate their energy transition.

CONTACT

Margaux Peltier
CEO & Co-Founder
margaux@enerdrape.com





LOOKING FOR

INVESTORS
PARTNERS
TALENTS

FUNDING

PRE-SEED

PRODUCT DESCRIPTION

fortyfour is a climate-tech startup revolutionizing sustainable and low-cost CO₂ supply. Co-founded by Henry Müller (CEO) and Pedro Reina (CTO), the startup wants to bring an end to fossil dependence by developing a cost-efficient Direct Air Capture (DAC) technology for agricultural and industrial markets. While fossil-derived CO₂ is increasingly experiencing tightening regulations and volatile supply chains, fortyfour's technology enables on-site, flexible, and scalable CO₂ production.

CONTACT

Henry Müller
Co-Founder & CEO
henry.mueller@fortyfour.earth





Perovskia



LOOKING FOR

INVESTORS
PARTNERS
CUSTOMERS

FUNDING

SEED

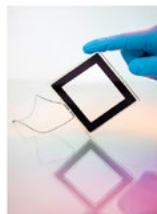
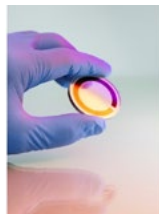
PRODUCT DESCRIPTION

Perovskia Solar AG develops ultra-thin perovskite solar cells on glass that harvest ambient light to power IoT, ESL, and smart devices. Our inkjet-printed, custom-designed cells can be made in any shape or size, enabling scalable, maintenance-free, batteryless electronics. Based in Switzerland, we merge deep science with scalable manufacturing to make every device self-powered – where light powers life.

CONTACT

Anand Verma
CEO

anand.verma@perovskia.solar





LOOKING FOR

**INVESTORS
PARTNERS**

FUNDING

**SEED
PRE-SEED**

PRODUCT DESCRIPTION

Planeto makes district heating network planning 10x faster. We're a Swiss cleantech startup developing our SaaS platform that digitalizes planning. What today takes months, our software does in hours.

Traction: 2M+ CHF raised, 7-person team, 8 paying clients including large Swiss utilities. Mission: Enable energy utilities to deploy renewable district heating at climate-emergency speed.

CONTACT

Stefano Cozza
CEO & Co-founder
stefano.cozza@planeto-energy.ch





LOOKING FOR

INVESTORS
PARTNERS
CUSTOMERS

FUNDING

SEED

PRODUCT DESCRIPTION

ProSeed develops industrial microwave processes for drying and sanitizing wet biomass from the food industry, turning energy-intensive, fossil-fueled operations into fully electric and efficient ones. By unlocking the use of microwaves through advanced modeling and real-time control, ProSeed drastically shortens drying times, improves product quality, and makes previously hard-to-dry materials feasible and usable for industrial applications.

CONTACT

Aurélien Ducrey
CEO

aurelien.ducrey@proseed.co





LOOKING FOR

INVESTORS
CUSTOMERS

FUNDING

SEED

PRODUCT DESCRIPTION

Riverkin deploys high-resolution sensor networks for dynamic freshwater monitoring, delivering actionable insights for water quality and ecosystem health. Our technology precisely detects extreme events, supporting both biodiversity metrics and the operational needs of water resource managers. By integrating advanced analytics, Riverkin provides the intelligence needed for effective environmental protection and resource optimization.

CONTACT

Danielle Lott
Data Scientist
danielle@riverkin.com





Seprify

MATERIALS



LOOKING FOR

INVESTORS
PARTNERS
CUSTOMERS

FUNDING

SERIES A

PRODUCT DESCRIPTION

At Seprify, we developed a patented extraction technology to produce functional cellulose ingredients in the food, pet food, cosmetics, personal care, inks and coating market to enable our customers switching to a circular economy without compromising on performance. Our first available product lines are a cellulose white pigment to replace titanium dioxide in food and coatings and a 100% natural UV booster for the cosmetic and personal care sector.

CONTACT

Lukas Schertel
CEO
lukas@seprify.com





LOOKING FOR

CUSTOMERS
INVESTORS
PARTNERS
TALENTS

FUNDING

SEED

PRODUCT DESCRIPTION

Swistor develops hybrid energy storage solutions that redefine energy storage by combining the high power and fast charge of capacitors with the high energy density of batteries. Our devices deliver 10× higher power, 60,000+ cycles (60x higher), and up to 100% improved power efficiency in AI data centers and renewable energy systems, while maintaining long lifetime and full recyclability. Our proprietary technology enables 3-5x higher energy density than competitors, without critical materials.

CONTACT

Clara Moldovan
CEO

clara.moldovan@swistor.com





treeless



LOOKING FOR

INVESTORS
PARTNERS
CUSTOMERS

FUNDING

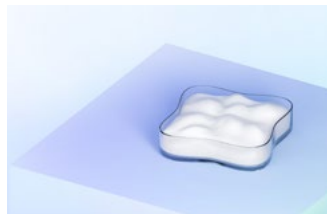
PRE-SEED
SEED

PRODUCT DESCRIPTION

At Treeless, we upcycle organic waste into value by using specialized microorganisms to produce nanocellulose, a high-performance biomaterial. Our nanocellulose enables companies to replace harmful fossil-based materials in industries like cosmetics, adhesives or packaging.

CONTACT

Adam Korczak
CEO and Co-Founder
adam@treeless.tech



Voltiris



LOOKING FOR
INVESTORS

FUNDING
SERIES A

PRODUCT DESCRIPTION

Voltiris develops the first solar modules compatible with greenhouse agriculture and their crops. Leveraging spectral filtering technology, Voltiris transmits to crops the essential light components for photosynthesis, while the ‘unused’ spectral elements are filtered and directed towards solar panels. Voltiris allows growers to leverage their greenhouse surfaces to generate the clean, competitive, and independent energy they need to transition to a carbon-free electrification.

CONTACT

Nicolas Dietrich
Chief of Staff
nicolas.dietrich@voltiris.com





BRIGHTSIDE



LOOKING FOR

**CUSTOMERS
INVESTORS
PARTNERS**

FUNDING

**SEED
GROWTH STAGE**

PRODUCT DESCRIPTION

Brightside AI stops AI-powered cyberattacks and deepfakes before they happen. Our platform uses OSINT to identify employee vulnerabilities and delivers hyper-personalized attack simulations – from email to voice phishing and deepfakes. Through gamified courses, we train teams to spot and respond to modern fraud. Each employee receives direct access to their personal OSINT exposure, while Brighty, our privacy companion, provides step-by-step guidance to close vulnerabilities and safeguard your company from phishing attacks. Proactive, automated recommendations and data removal tools make Brightside AI an engaging and frictionless way to secure your people and your business.

CONTACT

Andrey Lazarev
Co-founder and COO
al@brside.com





BEARMIND



LOOKING FOR

**CUSTOMERS
INVESTORS
PARTNERS**

FUNDING

**SEED
SERIES A**

PRODUCT DESCRIPTION

Bearmind commercializes helmet-integrated sensors and cognitive testing tools that help sports organizations monitor brain health and performance. Backed by clinical research, our platform delivers actionable data for athletic trainers and medical staff to detect risk and support return-to-play. With partnerships such as Bauer, the world's largest hockey OEM, Bearmind is setting the standard for science-based brain injury prevention in sports.

CONTACT

Mathieu Falbriard
Co-founder & CEO
mathieu@bearmind.tech



IMPLANZ



LOOKING FOR

INVESTORS
PARTNERS
CUSTOMERS
TALENTS

FUNDING

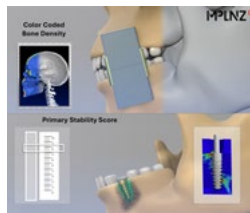
PRE-SEED
SEED

PRODUCT DESCRIPTION

IMPLANZ, a University of Bern spin-off, cuts dental implant treatment time from six months to one day by predicting implant stability before surgery. Our plug-in integrates into existing planning software, using CT/CBCT calibration and finite element simulations to deliver patient-specific insights. Beyond dental, the technology scales to hip, knee, spine, and shoulder implants, addressing a CHF 50B global market.

CONTACT

Patrik Wili
CEO & Co-Founder
patrik.wili@implanz.ch





MYNERVA



LOOKING FOR

INVESTORS
PARTNERS
TALENTS

FUNDING

SEED

PRODUCT DESCRIPTION

MYNERVA is developing a revolutionary, non-invasive medical device to treat diabetic neuropathy. There is no effective treatment for the 236M people living with this condition which causes chronic pain, loss of sensations and falls. Our patented SMART Sock is the only solution that simultaneously restores lost sensation and relieves pain. Developed at ETH and with results published in Nature Communications, it combines advanced pressure sensing, neurostimulation, and AI-driven personalization.

CONTACT

Dr. Greta Preatoni
CEO & Co-founder
greta.preatoni@mynerva.com



PROVUU



ENHANCED VISIBILITY XR GOGGLES



LOOKING FOR
INVESTORS

FUNDING
SEED

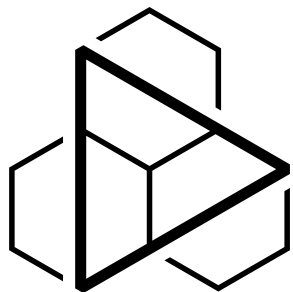
PRODUCT DESCRIPTION

We create enhanced visibility AR snow goggles to see clearly in any conditions. Poor visibility degrades performance, safety, and experience across outdoor industries. PROVUU enhanced vision technology is a platform for improved outdoor performance and safety in skiing/snowboarding, mountain rescue, motorsport/automotive, and defense.

CONTACT

Gabriellobbi
Cofounder
gabriel.iobbi@provuu.com





Resilient



LOOKING FOR

CUSTOMERS
PARTNERS
INVESTORS

FUNDING

PRE-SEED

PRODUCT DESCRIPTION

Resilient is a Swiss AI startup that prevents burnout and enhances employee wellbeing. Its AI coach provides personalized, therapy-inspired support, integrating biometric, behavioral, and contextual data. Companies gain anonymized insights to identify stress trends and foster healthier, more productive workplaces. Trained with leading Swiss therapists, Resilient combines clinical depth with scalable technology.

CONTACT

Max Grossenbacher
Co-founder & startup CEO
max@resilient.ai





LOOKING FOR
INVESTORS

FUNDING
PRE-SEED

PRODUCT DESCRIPTION

Watchibia AG develops a smart strap that adds health-tracking functions to traditional watches without altering their design. By integrating miniaturized sensors and electronics directly into the strap, Watchibia enables features such as heart rate, stress, sleep, and activity monitoring. The patented design preserves the elegance of Swiss watchmaking while bringing advanced wearable technology to luxury timepieces.

CONTACT

Olga Nijpels-Tishurova
Founder & CEO
ont@watchibia.com





LOOKING FOR
INVESTORS

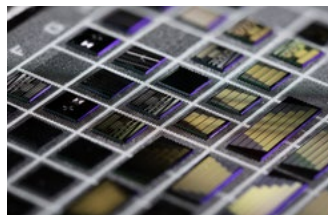
FUNDING
SEED
SERIES A

PRODUCT DESCRIPTION

CCRAFT is an open-access photonic chip foundry specialised in thin-film lithium niobate (TFLN). Born from years of R&D at CSEM, we deliver scalable solutions for AI data centers, HPC, telecom, space, sensing, and quantum. Our technology enables energy-efficient, high-speed optical communications through monolithic PICs, chiplets, and TFLN-enhanced silicon wafer processing – bridging innovation and industry with production-ready solutions.

CONTACT

Hamed Sattari
CEO
hamed.sattari@ccraft.com





LOOKING FOR

FUNDING

PARTNERS
CUSTOMERS
INVESTORS

PRE-SEED

PRODUCT DESCRIPTION

identic ai is a Swiss deep-tech startup that transforms 2D product images into high-quality 3D and XR models through its proprietary GenXR pipeline. The technology empowers retailers, designers, and architects to create photorealistic, scalable 3D/AR experiences in minutes—reducing time and cost by up to 90%.

CONTACT

Aksana Vogt
CEO
vogt@identic.ai





LOOKING FOR STARTUPS

DESCRIPTION

Whether your business is already based in the Canton of Bern or you are looking to establish a presence here, the Bern Economic Development Agency supports you with a wide range of services, financial contributions & infrastructure.

CONTACT

Ayşe Cirit
Senior Project Manager
ayse.cirit@berninvest.be.ch



Schaffhausen area for makers



LOOKING FOR

INVESTORS

STARTUPS

PARTNERS

DESCRIPTION

Schaffhausen - area for makers is a Swiss business region that moves with you. In Schaffhausen, ideas don't sit still – they grow. People find space to create. Businesses find partners who act, not just plan. This is a place for momentum. For progress, for those who turn ambition into reality. Where your business feels at home. Small yet mighty, Schaffhausen offers a business-friendly environment, a deep regional talent pool, and strong ecosystems of high-tech and innovative industries.

CONTACT

Adrian Stettler
EVP International Affairs
adrian.stettler@generis.ch



kanton**schwyz**



LOOKING FOR

INVESTORS

STARTUPS

PARTNERS

DESCRIPTION

The Canton Schwyz is a highly developed business canton. It is located in the heart of Switzerland and is part of the Greater Zurich Area. Besides providing distinctive financial services, the canton is specially attractive for international headquarters, for medical technology companies, for the advanced manufacturing industry as well as the AI industry - startups included. The location offers highly qualified workforce and low tax burden for companies and private individuals.

CONTACT

Urs Durrer
Head Official Office for Economy
urs.durrer@sz.ch



Kanton St.Gallen



LOOKING FOR

STARTUPS

TALENTS

INVESTORS

DESCRIPTION

The canton of St.Gallen combines traditional entrepreneurship with a high level of innovation, strong networks, and internationality. The canton is characterized by short distances to all relevant players – from brainstorming to scaling. Startups benefit from quick access to educational and research institutions with international appeal, an excellent network of investors, and an inspiring environment of peers. All this is in line with the motto “Success through Access.”

CONTACT

Silvan Fuchs
Project Manager
silvan.fuchs@sg.ch





SWITZERLAND INNOVATION

PARK NETWORK WEST EPFL



LOOKING FOR

**PARTNERS
CUSTOMERS**

STARTUPS

INVESTORS

DESCRIPTION

Switzerland Innovation West EPFL is your gateway to the Swiss innovation ecosystem. With 6 innovation parks, 20 world-class research institutions, and hundreds of corporates and startups, we support you in identifying the ideal location for R&D, finding the right partners, and accelerating your innovation journey.

CONTACT

Giovanni Porcellana
Deputy Director
giovanni.porcellana@epfl.ch





business incubation centre



LOOKING FOR

INVESTORS

PARTNERS

CUSTOMERS

DESCRIPTION

ESA BIC Switzerland offers funding, business support and technical support to Swiss deep-tech startups with a space connection to develop their business in space or on earth. Our 92 portfolio startups and scaleups build not only rockets and satellites, but also batteries, software, sensors, chips, lasers and robots, targeting challenges across verticals like (aero-) space, agriculture, pharma, communication, logistics, inspection, mining and more.

CONTACT

Thomas Ackermann
Startup Program Manager
thomas.ackermann@sl.ethz.ch



GREATER ZURICH AREA



LOOKING FOR

INVESTORS

PARTNERS

STARTUPS

DESCRIPTION

Greater Zurich Area Ltd. offers international companies a one-stop expansion support service for entering the Swiss and European markets. Whether you're setting up your European headquarters, launching an R&D hub, or scouting for a strategic base in Europe, we help you navigate every step: from location evaluation and tax guidance to regulatory insight, networking, and site visits. Our services are personalized, fast, confidential, and completely free of charge.

CONTACT

Milena Lussi
Senior Project Manager Greater Zurich Area
milena.lussi@greaterzuricharea.com



INNOVAUD



LOOKING FOR

PARTNERS

STARTUPS

INVESTORS

DESCRIPTION

Innovaud is the innovation and investment promotion agency for the canton of Vaud, in Switzerland's Lake Lemman region. We help tech-oriented companies (startups, scale-ups, SMEs and corporates) develop their businesses and carry out innovation projects. We also assist foreign companies wanting to set up in our region.

CONTACT

Patrick Barbey

CEO

patrick.barbey@innovaud.ch



kickstart



LOOKING FOR

PARTNERS

STARTUPS

INVESTORS

DESCRIPTION

Kickstart is one of Europe's largest zero equity, open innovation platforms, building innovation ecosystems with purpose, by fast-forwarding innovation. Kickstart brings together public and private organizations, startups, investors and experts. So far over 500 startups were supported who raised over 3 billion as well as launched over 380 pilots and commercial projects with organizations like AXA, La Mobilière, PostFinance, Swisscom and others.

CONTACT

Blanka Skácelová
Operations Manager
blanka@kickstart-innovation.com



LUZERN

FACEBOOK BUSINESS



LOOKING FOR

INVESTORS

STARTUPS

PARTNERS

DESCRIPTION

Lucerne Business is the official economic development agency of Lucerne. We promote the canton internationally as a prime business location in the heart of Switzerland, connecting global companies with local opportunities. We support international firms in setting up and expanding in Switzerland with tailored guidance, market insights, and key networks - fostering sustainable growth, innovation and success at the center of Europe.

CONTACT

Nadine Rotzer
 Project Manager Promotion & FDI
nadine.rotzer@luzern-business.ch



spicehaus⁺



LOOKING FOR

CO-INVESTORS
VCS
LPS (LIMITED PARTNERS)

INVESTMENT STAGE

SEED
SERIES A

DESCRIPTION

Spicehaus is an independent Swiss venture capital investor. We focus on seed and early stage companies in the technology sector in Switzerland. We are hands-on investors and actively accompany our portfolio companies on their road to success.

Geographical focus : Switzerland

Fund size : CHF 31m

Ticket size : CHF 500'000.-

CONTACT

Teddy Amberg

Founding Partner

teddy.amberg@spicehaus.com



swisscom

Ventures



LOOKING FOR

STARTUPS
CO-INVESTORS / VCS

INVESTMENT STAGE

SEED
SERIES A - B - C

DESCRIPTION

Swisscom Ventures is the venture capital arm of Swisscom AG, the leading telecommunications and IT provider in Switzerland. Since our inception in 2007, we have invested in over 90 IT, digital media and telecommunication companies from our offices in Switzerland (Zurich and Lausanne) and the USA (Silicon Valley).

Geographical focus : Switzerland, Israel, Europe, USA

Fund size : CHF 600m

Ticket size : CHF 2-10m

CONTACT

Max Vogt
Investment Manager
maximilian.vogt@swisscom.com





LOOKING FOR

CO-INVESTORS / VCS
STARTUPS
LPS (LIMITED PARTNERS)

INVESTMENT STAGE

SEED
SERIES A

DESCRIPTION

Vi Partners is the longest-established Swiss Venture Capital firm. For more than 20 years, Vi Partners has been supporting innovative Technology and Healthcare companies, investing over CHF 350m in 70+ startups. Vi Partners-managed funds are backed by Switzerland's most visible companies and institutions, including ETH Zürich, ABB, Bühler, UBS, Hilti, McKinsey, Nestlé, Schindler, Sulzer, Suva and ZKB as well as the European Investment Fund and many other institutional investors.

Geographical focus : Switzerland, France, Germany, Europe

Fund size : CHF 110m

Ticket size : CHF 2-4m

CONTACT

Bruno Trivelli

Investor

bruno@vipartners.ch



ABOUT SWISSTECH:

The swisstech campaign is a private-public initiative supported by Presence Switzerland, Innosuisse, Swissnex and Switzerland Global Enterprise. The campaign aims to raise Switzerland's profile as a world-leading innovative location for business and to increase the visibility of its deeptech and other state-of-the-art companies as well as of its research excellence abroad. To learn more, please visit: www.swiss.tech

Follow #swisstech to discover the best Swiss Made technology at the most relevant global tech events. As an outstanding innovation and technology hub, Switzerland is an attractive location for investors and foreign companies.

Pavillon swisstech :

Messukeskus Helsinki - Pavilion 7B6

PAVILION PARTNERS

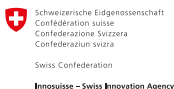
SWISSTECH PAVILION PRESENTED BY



IN COOPERATION WITH



SWISSTECH CAMPAIGN POWERED BY



swisstech.